

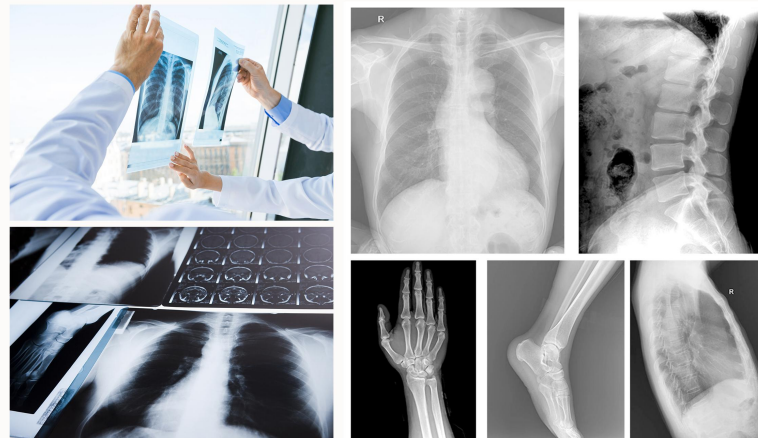
HF-XR50RP

Digital Medical X-Ray Radiography System

HF-XR50RP

-High-frequency power meets all kinds of large volume, thick position radiography. High-voltage generator outputs more stable kV. Large-heat capacity of X-ray tube supports long time and large dose of continuous working. Fast anode rotation ensures great heat dissipation and long service life.

-Four-sides floating bed would extend the coverage of the radiography, fully meeting clinical radiography request. $\pm 180^\circ$ vertical column rotation in four directions, every 90° automatically lock, easily turn the X-ray tube to achieve the horizontal position radiography. The flat panel detector is synchronous movement with the vertical column, electromagnetic unlock, which will more reliable and safer.



Main Technical Data

HF-XR50RP	X-ray machine
Max Output Power	5kW
Power Capacity	100kV@50mA
Radiographic kV Range	40-110kV
Radiographic mA Range	32-100mA
mAs Range	0.32-315mAs
Exposure Time Range	0.01-6.3s
Operating Frequency	≥ 30 kHz
Input Power Type	220V $\pm 10\%$, 50Hz/60Hz Or 110V $\pm 10\%$, 50Hz/60Hz
Dimensions	370mm*300mm*240mm including collimator
Weight	21KG
Inverter Method	PWM(pulse width modulation)

Multiple:

Multifunctional floor mounted system with the wireless flat panel detector, it supplies you a comprehensive, cost-effective, space saving solution.

Compact:

Compact system offers stress-free flexible positioning experience, greatly improve the efficiency of the workflow. All movement manual operation available.

Humanized:

All free rotation of x-ray tube arm and tube stand integrate with the wide range tabletop movement would assist the radiographers to operate smartly. Various examinations can be done easily and smoothly. X-ray tube arm swivel capability supports stretcher or wheel chair examination.

Excellent:

Large view wireless flat panel detector optimizes the diagnosis accuracy by the excellent image quality with fast acquiring speed and unlock the value of existed general x-ray system.